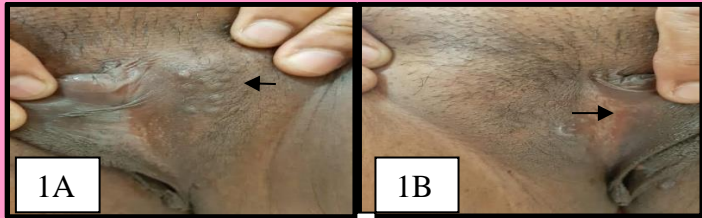


Isolated vulvar syringoma in a postmenopausal woman mimicking Genital Darier's disease-A case report

Background: Syringoma is a benign eccrine gland tumor, commonly seen in the periorbital area. Genital lesions may be seen in cases presenting with eruptive syringomas; however isolated syringomas of the genitalia or vulva with a possible association with hormonal changes have been uncommonly reported.

Case: A 47 years old, postmenopausal female presented with multiple raised itchy lesions over the genitalia for past 1-2 years.

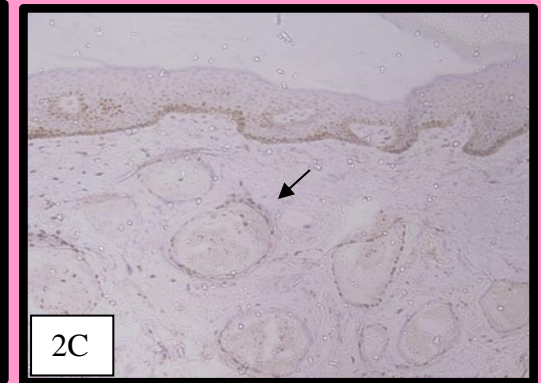
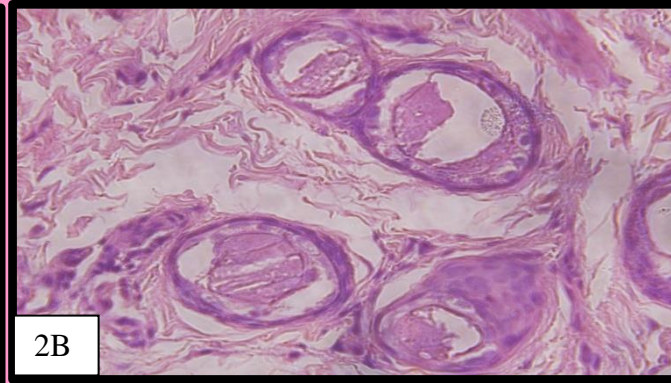
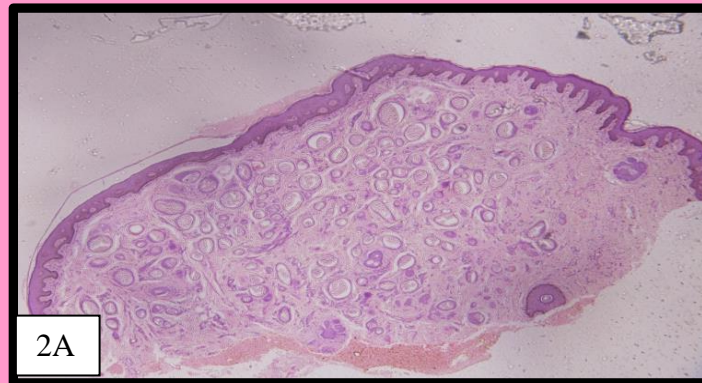
Examination:



Multiple skin colored to hyperpigmented, discrete, round to oval papules of size ranging from 0.5 -1 cm in diameter were seen over bilateral labia majora. Nail: Melanonychia and v-notching. Rest- WNL

Clinical differentials: Genital darier's disease
Bowenoid papulosis

HPE:



Photomicrograph 2A: A circumscribed lesion involving the dermis showing several cystic spaces in a sclerotic stroma. (H&E40x). 2B: Ducts of epithelial cells in a sclerotic stroma. (H&E 400x). 2C: ER positivity

Final diagnosis: Isolated vulvar syringomas

Conclusion: Isolated vulvar syringoma is a possible entity, whose causation might have some hormonal implications and it must be considered in the differential diagnosis of any flesh colored or pigmented pruritic papules and nodules of the vulva. The diagnosis of this benign entity is important to prevent the use of unnecessary investigations and treatment.